

NoteTaker for Mac

Installation and Use

Table of Contents

Installation and Use	1
Table of Contents	2
Installing the NoteTaker for Mac software	3
Using the NoteTaker Preferences Tool	5
<i>About the NoteTaker Preferences Tool</i>	<i>5</i>
<i>Setting Preferences with the NoteTaker Preference Tool</i>	<i>5</i>

Installing the NoteTaker for Mac software

The following procedure guides you through installation of the NoteTaker for Mac.

1. Click on the NoteTaker installer icon (NoteTaker.pkg). The **NoteTaker Installer** opens (a standard Mac installer):

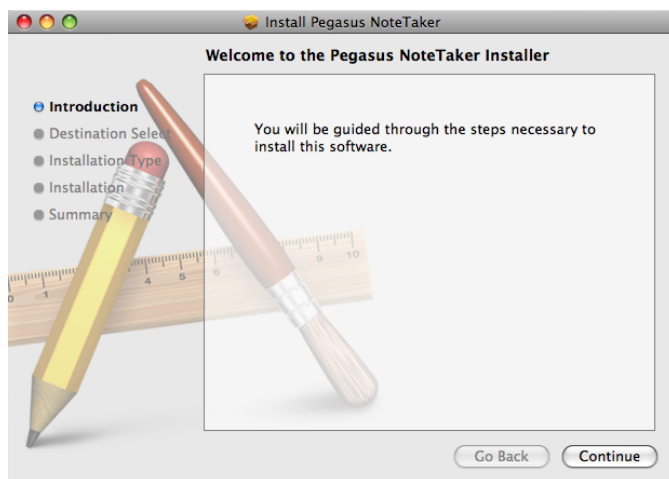


Figure 1: NoteTaker Installer

2. Click **Continue**. The Installer advances to the **Destination Selection** step. In this step, you are asked to choose the location (usually your Mac hard drive) where you want to install the NoteTaker software. When you select (click on) your preferred hard drive, the Installer confirms your selection:

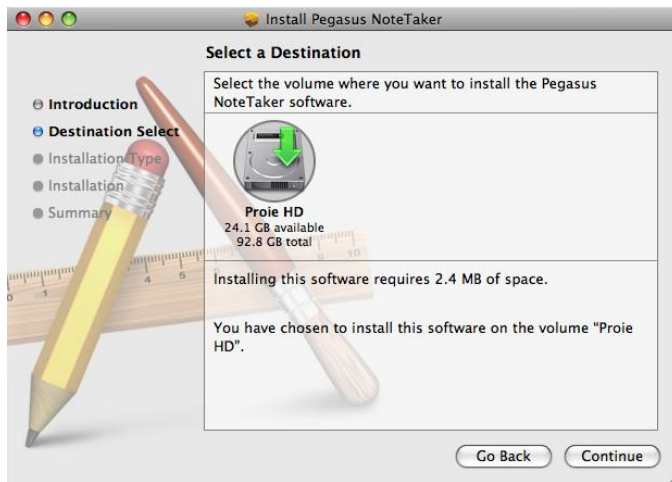


Figure 2 Installer showing the Destination Select stage

3. Click **Continue**. The Installer advances to the Installation Type stage. In this stage, you confirm that you want to perform a standard installation of the NoteTaker software on the hard drive you selected.

Notes: Performing a standard installation will install the software directly into your Applications folder on your Mac's hard drive.

If you want to change the location to which the software will be installed, clicking Change Install Location will return you to the previous step, Choose Destination Location.

4. Click **Install**. The **Password** dialog opens.
5. Enter your user password and click **OK**. The NoteTaker software is installed on the drive you selected and the **Install Succeeded** message is displayed on the Installer.
6. Click **Close** to close the Installer and complete the installation.

Using the NoteTaker Preferences Tool

About the NoteTaker Preferences Tool

When you use your Digital Pen to write text, everything you write is saved as a series of TIFF (Tagged Image File Format) images in the Tablet Mobile NoteTaker memory. Before you can work with your text on your Mac, you first need to transfer the TIFF images from the Tablet Mobile NoteTaker to your Mac's hard drive. When you connect the Tablet Mobile NoteTaker to a USB port on your Mac, your text is automatically transferred directly from the Tablet Mobile NoteTaker to your Mac.

Before you can start transferring your text from the Tablet Mobile NoteTaker, you first need to set preferences on your Mac. By setting preferences, you decide:

- where on your Mac's hard drive you want to save the TIFF images;
- whether you want to erase the TIFF images from the Tablet Mobile NoteTaker after you have imported them to your Mac.

You set these preferences using the **NoteTaker Preference Tool**.

Setting Preferences with the NoteTaker Preference Tool

The following procedure describes how to set preferences using the NoteTaker Preference Tool:

1. Click on the NoteTaker Preferences icon. The NoteTaker Preferences dialog opens:

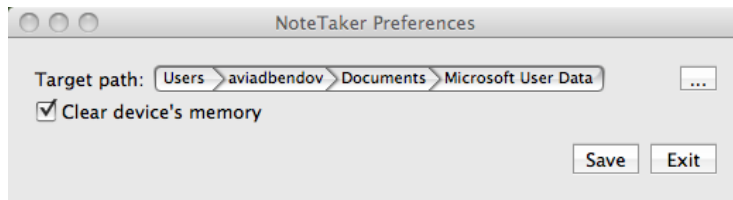


Figure 3: NoteTaker Preferences dialog

The NoteTaker Preferences dialog consists of the following elements:

- The **Target Path** – displays the path to the location on your Mac's hard drive where TIFF images from the Tablet Mobile NoteTaker will be saved.
 - The **Clear Device Memory** checkbox – if this checkbox is checked, the Tablet Mobile NoteTaker's memory will be cleared (erased) after you upload TIFF images to your Mac. If the checkbox is unchecked, the TIFF images will remain saved on the Tablet Mobile NoteTaker after you have uploaded them to your Mac.
2. The first preference you need to set is the location on your Mac where TIFF images will be saved when you transfer them from the Tablet Mobile NoteTaker. The **Target Path** displays the default location to which the TIFF images will be saved. To choose a different path, click the ellipsis button ("...") to open the Finder window:

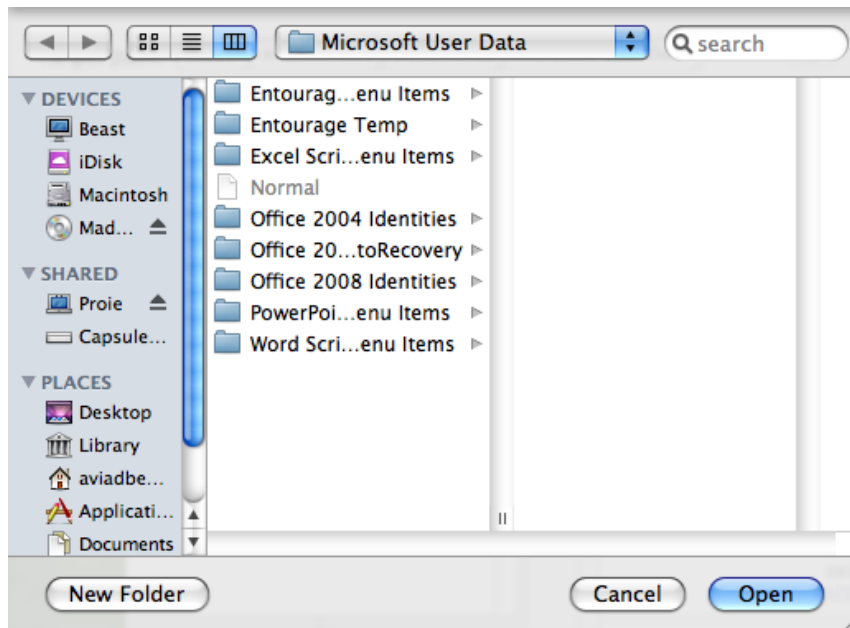


Figure 4 NoteTaker Preferences Finder window

3. Choose where on your Mac you want to save TIFF images by clicking on the relevant location in the left hand column, and then click **Open**. The Finder window closes and the new Target Path is displayed in the NoteTaker Preferences dialog.
4. If you want to clear the NoteTaker 210's memory each time you upload TIFF images from it, check the **Clear Device Memory** checkbox. To leave the TIFF images on the Tablet Mobile NoteTaker after they are uploaded, leave the checkbox unchecked.
5. To save your preferences and close the NoteTaker Preferences dialog, click **Save**. When you next connect the Tablet Mobile NoteTaker to your Mac, your images will be uploaded according to the preferences you have set.
6. To close the NoteTaker Preferences dialog without saving any changes, click **Exit**.

This page has been deliberately left blank.